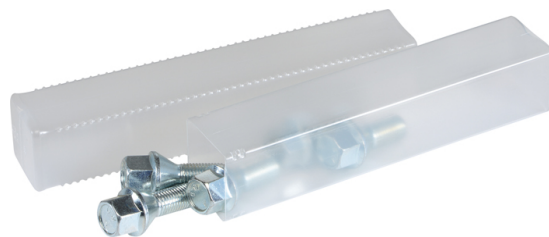
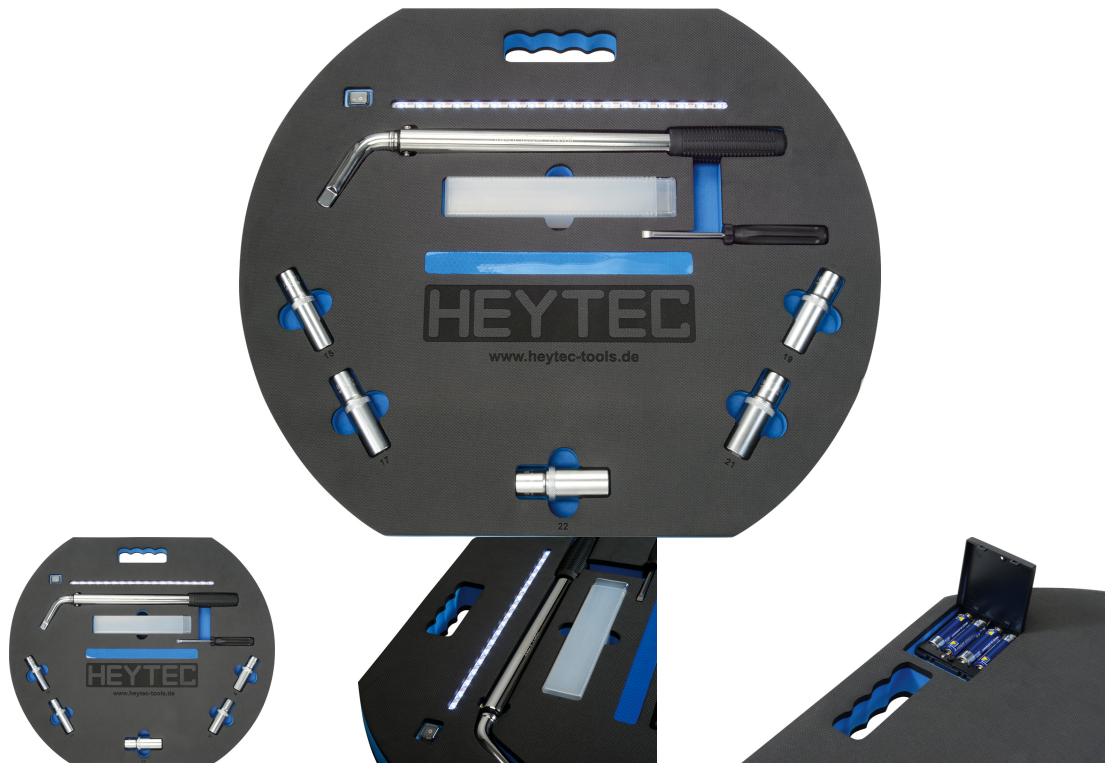
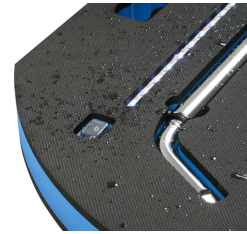
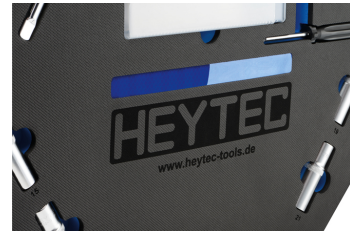


Wheel changing tool set, 8 pcs.









Tool kit for a quick and easy change of wheels. All necessary tools in a high quality 2-K foam insert for storage in the trunk. Safe and comfortable working. Fixed 140 Nm-torque wrench to ensure secure screwing. Integrated LED light strip allows working in the dark. Fixed torque wrench, 140 Nm, 1/2" drive. Extra deep Chrome Vanadium sockets SW 15/17/19/21/22 mm. Empty storage box for rim lock/wheel bolt. Reversible screwdriver, plain-slot/cross-head screws. Light pad with 18 LED, splash-proof. 4 batteries 1.5V AA included. Reflective strips on front and back side. Integrated kneeboard. Battery compartment on the back, splash-proof. High grade 2 components foam, Dimension L 550 x W 470 x H 40 mm.

Details	
Code-No.	50820160900
Art. No.	5082016
Dimensions	L 550 x B 470 x H 40 mm
Weight	2500
Packaging unit	1



Details

EAN 4024089404876

Packaging cardboard