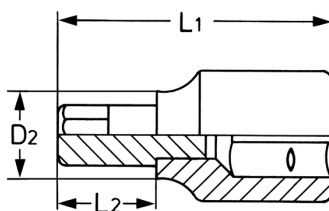
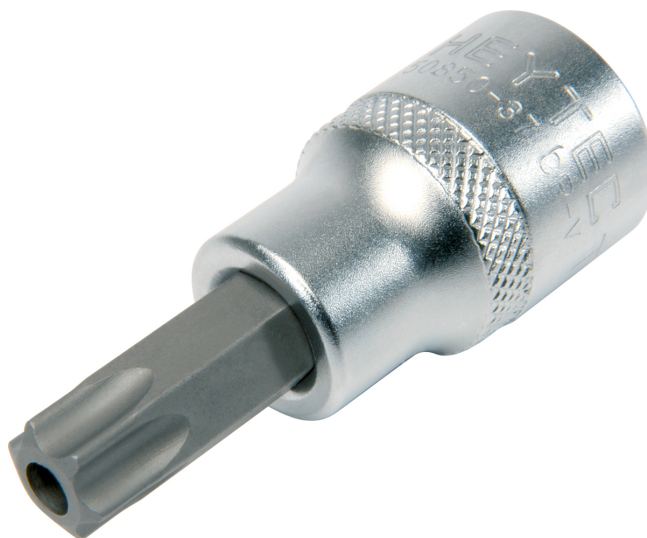


Schraubendreher-Einsätze, für Innen Tamper TORX-Schrauben, 1/2", TT45 x 62 mm



Chrom-Vanadium, verchromt.

Details	
Code-No.	50850374583
Art. Nr.	50850-37-45
TT	TT45
TT mm	7,82
L1 mm	62,0
L2 mm	24,0
D2 mm	18,0
Gewicht	88



Details

Verpackungseinheit	10
EAN	4024089331264
Verpackung	Karton